

**Onset**  
S40



**Onset S40**

Highest quality of all high-volume flatbed presses

Fujifilm proudly announces the Inca Onset S40, the latest addition to its market-leading Inca Onset range of full-bed array wide-format UV flatbed inkjet printers. Positioned between the flagship, super high productivity Onset S70 at 8,073 sqft/hr (750sqm/hr) and the Onset S20 at 3,340 sqft/hr (310 sqm/hr), the new Onset S40 prints at up to 5,059 sq ft/hr (470 sqm/hr).

Offering many of the features associated with the Onset range, including wide color gamut, satin and controllable gloss levels, variable job management and the option of automation, the Onset S40 produces superb POP-quality display graphics economically at throughput speeds of 94 full bed 63"x123.6" (3.14 x 1.6m) sheets/hr and onto substrates up to 2" (50mm) thick.

In addition to CMYK configuration, the S40 offers an optional 6-color configuration with CMYK+LcLm. The ability to vary the gloss level gives the user flexibility to set the desired gloss level on a per job basis directly from the operator console.

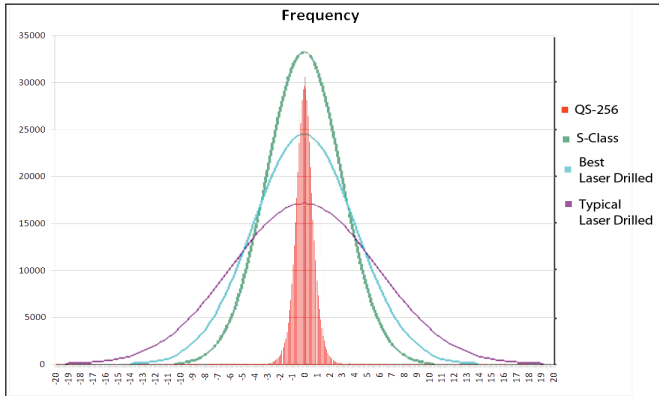
At this throughput level, production efficiency is important to ensure maximum productivity and cost-efficiency with minimal downtime in order to deliver the best ROI. As a result, the Inca Onset S40 is compatible with Inca's flexible automation system which offers customers the choice to operate in manual, semi or three-quarter automation from the same configuration, as well as Inca's Print Run Controller (PRC) software module.

### Inca Onset S40 Features:

- Uses new Fujifilm Dimatix Sapphire QS-256 "MEMS" printheads
- Throughput of 94 full beds an hour
- Full Bed Print Array
- 6-color Expanded Color Option with Light Cyan & Light Magenta
- Variable gloss levels from Satin to Gloss
- 3/4 Automation option

## FUJIFILM DIMATIX SAPPHIRE QS-256/30 PRINTHEADS

The Onset S40 is the first Inca platform with Fujifilm's new QS series "MEMS" printhead technology. The QS head features double nozzle density in the same compact space (256 inline nozzles) producing smoother prints. The MEMS technology improves drop placement accuracy to produce offset quality prints.



The Onset S40 uses Fujifilm Dimatix Sapphire QS-256/30 "MEMS" printheads to produce higher quality prints, shown above.

## UVIJET INK

The FUJIFILM Uvijet family of inks offers excellent adhesion and flexibility. Uvijet inks have been developed for a wide range of media. Ideal for both indoor and outdoor applications including banners, POP, backlit images, exhibition graphics, signage, printing onto glass, metal, acrylic and board for example. These inks have been specifically formulated to maximize production output and provide a wide color gamut coupled with bright colors.

# Inca Onset S40

## ONSET S40 – FOUR OR SIX COLOR

The Onset S40 four-color offers an affordable solution for fast and accurate printing for a wide range of point of sale and graphic display applications. Onset S40 six-color gives the operator the ability to enhance print quality by adding light cyan and light magenta colors. This provides even smoother color transitions of light colors and skin tones. A six-color S40 is an excellent solution for customers selling print for closer viewing distances or as an alternative to offset prints.

## OPTIONAL 3/4 AUTOMATION SYSTEM

The optional 3/4 automation system increases the throughput of the S40 by +25-50% by minimizing handling time from 20-45 seconds manually, down to 9- 12 seconds with automation. As a result, the S40 can produce up to 94 beds per hour with automation as opposed to up to 61 beds per hour manually (with 30 second handling). The pre-load table allows the operator to place and pre-register the sheet(s) while the press is printing. The pre-load table includes 3 registration points for 1-up full bed sheets, or 3-up 40"x60" sheets. The automation system then automatically loads from the pre-load table to the print and removes each sheet from the print bed to a finished stack on an automated scissor lift. The finished stack can be configured to side-unload, or end-unload.

## SPECIFICATIONS:

### Print Area

- 123" x 63"  
(edge to edge printing)

### Print Finish

- Variable, Satin to Gloss

### Max. Substrate Thickness

- 2"

### RIP

- ColorGATE Production Server (Fujifilm or Inca Edition), Version 6.2 or later
- Wasatch SoftRIP® v6.7 or higher

### Sericol Uvijet UV Inks

- OB - series UV curable inks (CMYK + Light cyan and magenta)

### Space Required

- Manual – 19' 4" (W) x 45' 3" (L)
- Short-Edge Auto – 23' 3" (W) x 54' 5" (L)
- Long-Edge Auto – 35' 1" (W) x 42' 7" (L)

### Power

- 380-480V 3-Phase 50/60 Hz, rated to 100A

### Factory Air requirement

- 90 PSI (6 bar)

### Network

- 1000 Base-T

\* Product specifications are subject to change without notice.

Beds Produced Per Hour			
		Auto	Manual*
8 pass Bi-di	Satin • Gloss	94 • 76	61 • 53
10 pass Bi-di	Satin • Gloss	74 • 62	54 • 47
18 pass Bi-di	Satin • Gloss	55 • 48	43 • 39

Sq Ft Produced Per Hour			
		Auto	Manual*
8 pass Bi-di	Satin • Gloss	5,059 • 4,100	3,299 • 2,863
10 pass Bi-di	Satin • Gloss	3,973 • 3,356	2,906 • 2,561
18 pass Bi-di	Satin • Gloss	2,950 • 2,596	2,318 • 2,093

\* Manual handling time is calculated at 30 seconds