

FUJIX Digital Card Cameras

D S - 5 0 5 A

D S - 5 1 5 A



D I G I T A L   S L R s   F O R   T H E   C O N N O I S S E U R

All pictures in this brochure were taken with a DS-505A/DS-515A.

# Digital photography comes into its own.



It takes only a few moments to forget everything you've heard about digital photography.

Just mount a Nikon F-mount lens and take several shots with the Fujix Digital Card Camera DS-505A or DS-515A. The first surprise will be how familiar it feels, and you'll be even more amazed when you download an image to your PC. Examine all the details, and check them again. You'll agree the quality is beyond anything you thought possible.

It's only what serious photographers should expect from the company that knows what they want. Our original optical system and renowned CCD technologies have brought a new degree of performance to digital cameras. The real-image viewfinder works exactly the same way as the one in your 35 mm SLR, and the other functions are similar as well. You'll also welcome the convenience of automatic settings for both studio and outdoor photography.

And, of course, PC card recording offers computer storage and fast data transmission (along with simpler, faster production work).

Think about what you want from your next camera, and give the DS-505A and DS-515A a close look. Because these are unquestionably the digital SLRs for the connoisseur.





Expert Handling

# Can a digital camera make you forget it's digital? Naturally.



The DS-505A/DS-515A viewfinder shows virtually the entire shooting area.



The other SLR-type digital cameras have a much more limited shooting area.



Effective ISO 3200 adds up to better results than you might have thought possible in action photography with a digital camera.



The DS-505A and DS-515A are compatible with a wide range of F-mount lenses from Nikon.



Use the DS-515A to capture all the action with Continuous Mode shooting, as fast as three frames per second.

### It Works the Way You Do

With the DS-505A/DS-515A in your hands, what you see is what you get. Fujifilm's original condenser optics system directs almost all the light to the CCD, so 98% of the scene in the real-image viewfinder is recorded—a vast improvement over the limited shooting area of the other SLR-type digital cameras. Simply use the lens of your choice, and compose just as you do with a 35 mm SLR.

### Pushing the Limits

The DS-505A and DS-515A raise the effective ISO to an ultrahigh 3200. The key is the condenser optics system which delivers more light to the CCD—and that means greater sensitivity. With this extra performance, you're ready for shooting in dim light, or you can switch to a faster shutter speed for action photography.



### Cause for Confidence

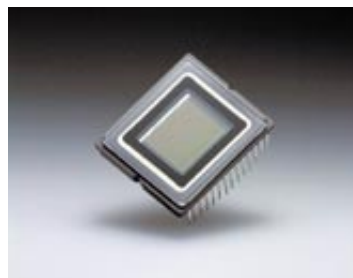
Your photographs can't be any better than your lens. That's why the DS-505A and DS-515A are compatible with many of the acclaimed F-mount Nikkor lenses from Nikon. Not only can you count on professional quality, but composing is natural since the condenser optics system creates a field of view matched to the focal length.

### Unequaled Speed, Uncommon Results

When every moment counts, you can depend on your Fujifilm digital SLR to come through for you. The DS-515A uses an innovative recording system to deliver an incredible three frames per second in a series of seven shots, while the DS-505A records continuously at one frame per second. To ensure that you always have the power you need, add the optional rechargeable battery for up to 1,000 shots from a single charge.



Uncompromised Quality



At the heart of any digital camera is its CCD image sensor—and that is why the high-performance DS-505A and DS-515A are earning the respect of demanding professionals.

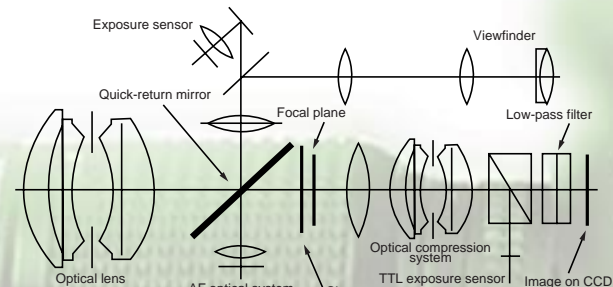


DS-505A/DS-515A



Other digital camera

### Condenser Optics System



# How did we raise digital quality to a new level? Every which way.

### Integration and Innovation

Image quality depends on the number of pixels in a digital camera's CCD, but more pixels lead to problems with data handling—except with the DS-505A/DS-515A. To overcome this difficulty, Fujifilm selected a 1.3 million-pixel CCD. The CCD is a 2/3-inch type with a Vacancy Transfer (VT) array—resolution that's very close to the line density of high-definition TV. Equally important, the pixels are square, so there's no conversion when you input your images to a PC. We've also developed High Data-Compression Technologies that speed up data handling without affecting image quality.

### Pure Performance

The DS-505A and DS-515A have an RGB color filter with an S/N ratio far superior to that of a complementary color filter. Even the intense reds of a flower are rendered with incredible accuracy, while the gray tones of a suit remain unaffected.

### Right from the Start

The optical system's low-pass filter can save you the headaches that come with color noise—the metallic look of red, yellow and blue specks glittering in the highlights. Even after the time-consuming task of curing these defects with computer processing, the results usually aren't completely satisfactory. But with our low-pass filter, you won't be bothered, because it prevents these problems during shooting.

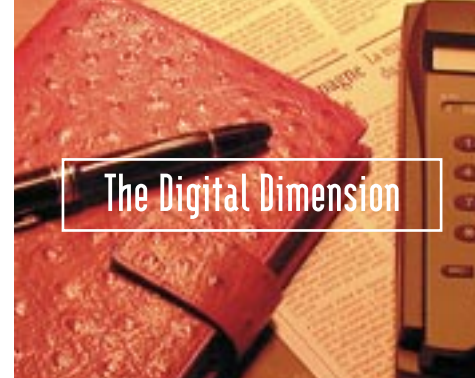


### Consistency Is by Design

Since a CCD has a narrower exposure latitude than 35 mm film, adjusting the exposure was often a problem until Fujifilm found the solution. Our pioneering condenser optics system has its own aperture, so it can control the exposure electronically with absolute precision. That way you can concentrate on taking great pictures without worrying about exposure adjustments, even when you change from one F-mount lens to another.

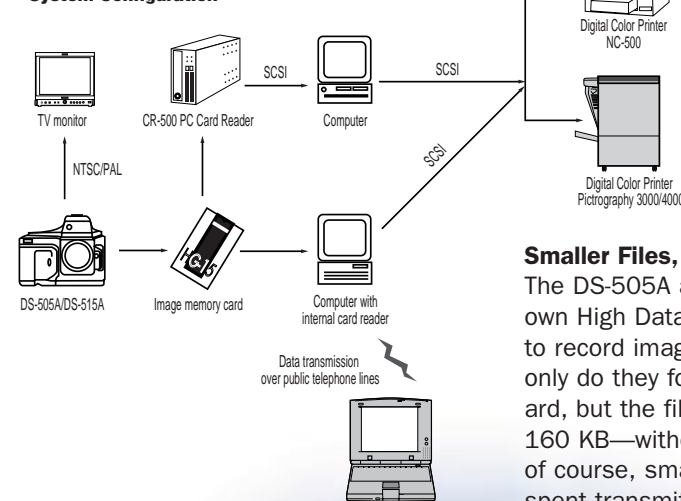
### The Ideal Balance

The Auto White Balance mode is so precise that you'll capture the subtleties of just about any subject, whether you're shooting portraits or products. From sunlight and city canyons to twilight and studio shots, just select the appropriate setting, and the balance will be optimized automatically. There's also a six-step Manual mode when you want complete creative control. And if you're working in changing natural light or artificial light, you can adjust the color temperature from 3000K to 8000K.

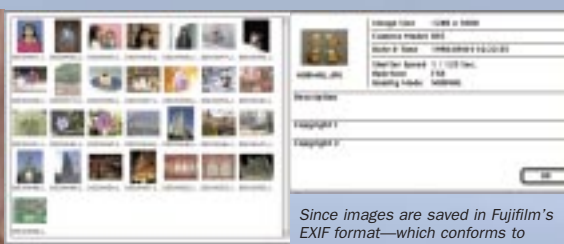
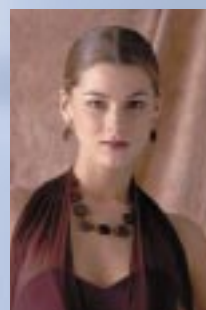


The Digital Dimension

### System Configuration



Simply connect the DS-505A/DS-515A to a TV or a portable LCD monitor, and you can check an image immediately, even before it's recorded. (The monitor is not included, and the image on the monitor is synthesized.)



Since images are saved in Fujifilm's EXIF format—which conforms to the JPEG and TIFF-YC standards—there won't be any problems with compatibility.

# Can digital images bring people closer? By all means.



FUJIFILM IMAGE MEMORY CARD HG-15



### Smaller Files, Faster Transmission

The DS-505A and DS-515A use Fujifilm's own High Data-Compression Technologies to record images in the JPEG format. Not only do they follow an international standard, but the file size is held to only 160 KB—without sacrificing quality. And, of course, smaller files mean less time spent transmitting data.

### Only the Best Is Good Enough

After inputting your images from the camera to your PC, just connect a full-color printer from Fujifilm for the ultrahigh quality you want in your digital photography.

Our Pictography 3000 and 4000 employ an unprecedented silver-halide photographic process to create up to 16.7 million colors in 256 gradations for each CMY. And the NC-500 Thermo-Autochrome (TA) printer delivers photo-realistic results with a pioneering process based on paper that colors itself.

### Easy, Quick Reviewing

Studio work requires one preview after another, and news photographers know there's not a minute to spare when they're up against a deadline. Those are two good reasons to use the unique analog video output terminal for checking images before and after shooting. It's the easy way to eliminate the need for time-consuming data transfer and display on a PC.

### The Storage Medium for Today

The DS-505A and DS-515A use an ATA-compliant PC card for storage. Available in 5 MB and 15 MB versions, our HG Series cards combine high capacity with data recording as fast as one frame per second.

### Simplified Data Handling, Too

Fujifilm's dedicated SD-D5 Photoshop™ plug-in simplifies working with numerous files and large quantities of data. You can display a number of images simultaneously in the Index format and then choose only the ones you want, just as you do with a contact print. You can also show the shooting date, exposure conditions and other information to decide if you want to save it.





# SPECIFICATIONS

## FUJIX DIGITAL CARD CAMERA DS-505A/DS-515A

<b>Format</b>	SLR Digital Card Camera				
<b>Lens mount</b>	Nikon F-mount				
<b>Focus modes</b>	Auto/manual				
<b>Exposure control</b>	Programmed auto/aperture priority/shutter priority/manual modes				
<b>Shutter control</b>	Electronically controlled focal plane shutter Manual: 1/2,000–1/8 sec, Auto: 1/2,000–1/2 sec, Flash Sync: 1/250 sec (max.)				
<b>Aperture</b>	F=6.7–38, Set in the Internal Condenser Optics				
<b>Exposure compensation</b>	1/4 EV step/±2 EV max.				
<b>Finder</b>	Optical Finder/Frame coverage; virtually 100% of actual picture area, Viewing magnification; 0.72X				
<b>Continuous film advance</b>	3 frames/sec up to 7 frames (DS-515A), 1 frame/sec* (DS-505A)			*When using Image Memory Card HG-15	
<b>CCD</b>	2/3-inch, 1.3 million-pixel (1,280 x 1,000) CCD				
<b>Effective ISO</b>	ISO 800/3200 modes				
<b>White balance</b>	Auto/manual (6-step) modes				
<b>File size</b>	1,280 x 1,000 pixels, 24-bit color				
<b>Storage medium</b>	ATA Type I or II, Flash				
<b>Data compression</b>	JPEG standard				
<b>Number of frames</b>	Image quality mode	Image compression ratio	Data size per frame	Min. number of frames per	
				HG-5 (5 MB)	HG-15 (15 MB)
	<b>HI</b>	Non-compression	Approx. 2.45 MB	1	5
	<b>FINE</b>	1/4	Approx. 640 KB	7	21
	<b>NORMAL</b>	1/8	Approx. 320 KB	15	43
<b>BASIC</b>	1/16	Approx. 160 KB	29	84	
<b>Output</b>	Video output: NTSC/PAL				
<b>Power source</b>	Dedicated NiCd battery/External power supply				
<b>Dimensions</b>	164 x 140 x 120 mm (DS-505A), 164 x 160 x 120 mm (DS-515A)				
<b>Weight**</b>	Approx. 1.65 kg (DS-505A), 1.85 kg (DS-515A)				**Includes battery without lens

## ACCESSORIES

### FUJIX Image Memory Card HG-15/HG-5

(Format: ATA Type I, Flash)

### FUJIX Power Supply Kit PK-D5

- FUJIX AC Power Adaptor AC-D5.....(1)
- FUJIX Rechargeable Battery Pack BP-D5.....(1)

### FUJIX Rechargeable Battery Pack BP-D5

### FUJIX Carrying Case LC-D5

### FUJIX Slave Adaptor SA-D5

(Automatically synchronizes the shutter release of the DS-505A/515A with an external flash.)

### FUJIX DS Camera Plug-in Module for Photoshop SD-D5

(Includes Macintosh® version and Windows® version in a package.)

Adobe Photoshop™ is a trademark of Adobe Systems Inc.  
Macintosh® is a registered trademark of Apple Computer, Inc.  
Windows® is a registered trademark of Microsoft Corporation.

All pictures in this brochure were taken with a DS-505A/DS-515A. The images were processed, and Fujifilm's pre-press system was used for output.

## PERIPHERAL EQUIPMENT

### FUJIX PC Card Reader CR-500

<b>Card slot</b>	2 slots • No. 1: ATA Type I / II / III • No. 2: ATA Type I / II
<b>Interface</b>	SCSI-2 (Full pitch 50P x 2)
<b>Data transfer rate</b>	Approx. 3 MB/sec
<b>Dimensions</b>	60 (W) x 123 (H) x 271 (D) mm
<b>Weight</b>	Approx. 1.2 kg

The CR-500 includes driver software for Macintosh® and Windows®.

FUJIX DIGITAL CARD CAMERA

### DS-515A (High-speed continuous shooting)

