

FUJIFILM
I&I - Imaging & Information



digital
Tools for the imagination.



DIGITAL CAMERA
FinePix 40i

New



Digital Camera or
MP3 Player?
Or How About Both?



It's A Stylish Digital Camera and MP3 Player— Get Ready to Explore a New Digital Way of Life!

FinePix40i is a stylish, compact digital camera that you'll want to have with you at all times. This lightweight camera packs a Super CCD developed by Fujifilm that guarantees super-high image quality.

It enables FinePix40i to shoot digital images exactly how you expect, no matter what the scene.

But FinePix40i is not only a digital camera offering super-high image quality. It is a revolutionary new concept in multimedia devices. In addition to shooting still and moving images, it can also play MP3 audio, the hottest thing in the music scene. Now you can listen to your favorite music wherever you are.

FinePix40i is your passport into a new digital world!



Actual Size

DIGITAL CAMERA
FinePix40i



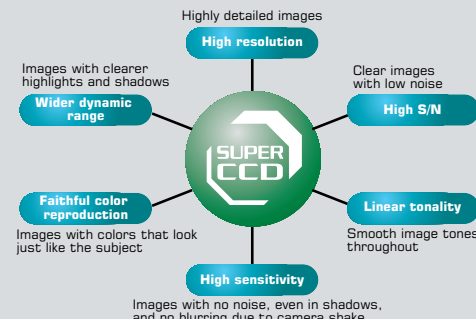
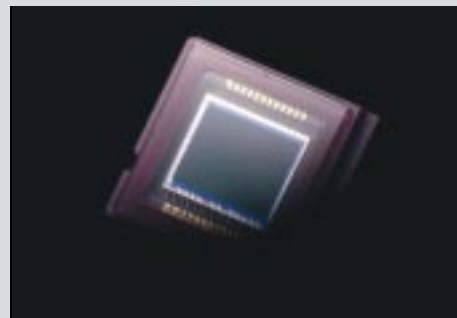
Lose yourself in a digital bliss as you capture your most treasured moments. FinePix40i quickly responds to your artistic desires, capturing every single detail and nuance of your subject. Our Super CCD faithfully reproduces vivid images that capture a moment in time forever. You will be amazed by its super-high quality achieved through comprehensive balancing of all elements that affect digital images. The perfect solution from FinePix40i.

Experience FinePix40i through Your **Eyes** and **Ears**

But the fun does not stop there. You can also store your favorite music on the camera's memory card so that you can enjoy MP3 music anywhere. This is Fujifilm's innovative breakthrough in digital cameras. With FinePix40i, you can take pictures and listen to your favorite music recorded from CDs or downloaded over the Internet. Now there's a new way to have fun with a digital camera.



Super Image Quality Comes from Super CCD



Super CCD Delivering Super-High Image Quality

FinePix40i packs Fujifilm's innovative Super CCD, which is unlike any other CCD that has come before. This revolutionary CCD achieves super-high quality through comprehensive balancing of all elements that affect digital images.

► Low Noise, High Sensitivity

Super CCD's octagonal-shaped photodiodes were designed with a pixel size larger than conventional CCDs. This enables the photodiodes to gather light more effectively from the lens, achieving a dramatic improvement in sensitivity, dynamic range, S/N ratio, and other image properties.

► High Resolution

By placing each pixel in an interwoven arrangement, we were able to increase both horizontal and vertical resolution. As a result, FinePix40i's 1/1.7-inch 2.4-million pixel Super CCD delivers incredibly high-resolution image files with up to 4.3 million pixels (2,400 × 1,800).

► Faithful Color Reproduction

Only Super CCD offers our superior image-processing algorithm that faithfully reproduces colors. This allows FinePix40i to deliver colors exactly how you see them, from subtle tones to highly saturated primary colors.

The Pleasure of A Quick Response

Our special ASIC chip for accelerating camera processes enables FinePix40i to be ready to shoot in only about 1.5 seconds after turning it on. It also offers continuous shooting of about one image a second. With FinePix40i, you will never again miss that precious photographic moment. Almost all of its features, including shooting mode selection and image playback, are easily accessible using the mode dial and buttons provided on the back of the camera.

High-Resolution Lens for Enhancing Super CCD Performance

FinePix40i sports a Super EBC Fujinon lens that is renowned for the detail with which it captures images. This high-performance, multi-coated lens with low chromatic aberration maximizes the potential of the built-in Super CCD. Now you can shoot highly realistic reproductions of human expressions, landscapes, and even buildings.

Maximum 3.75X Digital Zoom

FinePix40i offers 3.75X (in 640 × 480 pixel mode) and 1.875X (in 1,280 × 960 pixel mode) digital zooming. Only our Super CCD is capable of shooting beautiful images with little loss of image quality, even when fully zoomed in.

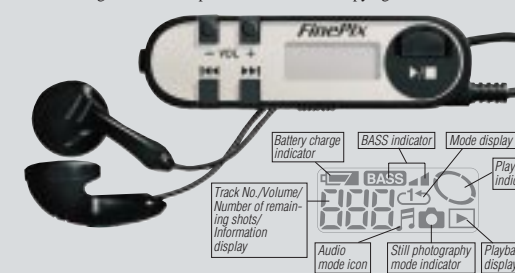
Enjoy MP3 Music Anywhere

Fantastic MP3 Audio Playback Function

FinePix40i features MP3 audio* playback. MP3 is the hottest new audio compression format for music today. You can listen to your favorite songs anytime, anywhere simply by storing music data from CDs or off the Web via your PC onto a SmartMedia™ card (with ID protection)** that you insert into your camera. FinePix40i also includes remote control-equipped headphones to make it even easier to play your music. SmartMedia™ cards allow you to enjoy up to two hours of music without any fear of skipping.

* MP3 (MPEG 1 Audio Layer 3) is an international audio compression standard that can achieve 10:1 compression without any noticeable loss of audio quality. The use of SmartMedia™ cards and other compact semiconductor-based storage media has many advantages including the use of extremely small MP3 players that provide CD and MD-like playback quality without skipping.

** The use of SmartMedia™ with InfoBind (a copyright protection system) and a unique ID effectively protects copyrights by encrypting music data to prevent unauthorized copying.



Simple Operation Using Remote Control-Equipped Headphones

You can use the remote control-equipped headphones to control the music you have recorded. Control features offer play, rewind, and fast forward among others. You can also use the remote control to shoot and play back images taken with the camera.

High-Speed MP3 Conversion and Editing Software

FinePix40i comes with software (Windows/Mac) for the super high-speed conversion* of audio CD tracks into MP3 files. This enables you to directly convert data from a wide variety of music sources. For example, you could convert a 4-minute song in just 1 minute using this software.

* Conversion speed depends on your computer's performance.



Fine mode, 2,400 × 1,800 pixels, 1/90 sec, f/3.5, ISO 200 equivalent



IT'S YOUR PASSPORT INTO A NEW DIGITAL WORLD

Compact, Stylish Design

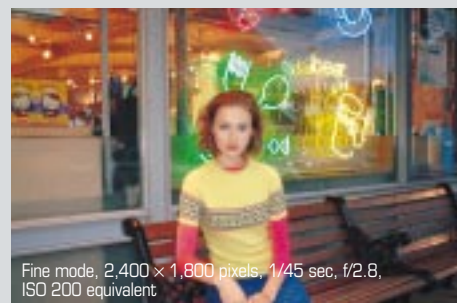


The compact FinePix40i sports a durable aluminum-magnesium alloy body that easily fits in a jacket pocket. And its metal lens cover that opens/closes automatically when the camera is turned on/off thoroughly protects its sensitive lens from dust and scratches.

Built-in Flash



Feel free to shoot in dark conditions thanks to FinePix40i's built-in flash that operates automatically whenever it is needed. In



Fine mode, 2,400 × 1,800 pixels, 1/45 sec, f/2.8, ISO 200 equivalent

Night Scenery Mode

addition to auto-flash, you can select red-eye reduction, forced flash, no flash, or slow-sync.

Intelligent Auto White Balance and AE

Intelligently determines light volume, light source and color information so that your images will always have a natural white balance, and programmed AE optimizes the exposure with TTL metering across 64 zones.



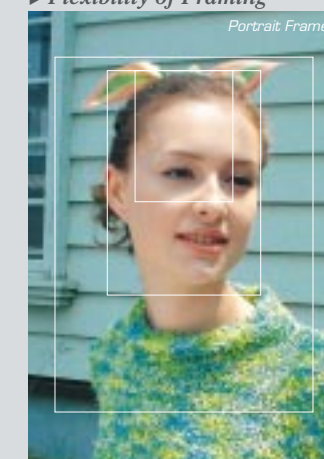
Fine mode, 2,400 × 1,800 pixels, 1/750 sec, f/2.8, ISO 200 equivalent

Host of Shooting Features

► Auto mode Shooting

Lets you shoot pictures in almost any situation. It appropriately adjusts exposure and color balance by means of high-precision TTL metering with programmed auto exposure and intelligent Auto White balance. And with its ultra-high precision auto-focus system, you get a sharp, in-focus image in an instant.

► Flexibility of Framing



Allows anyone to easily shoot well-balanced compositions by viewing the LCD monitor. Scene, Portrait, and Group framing options are available.

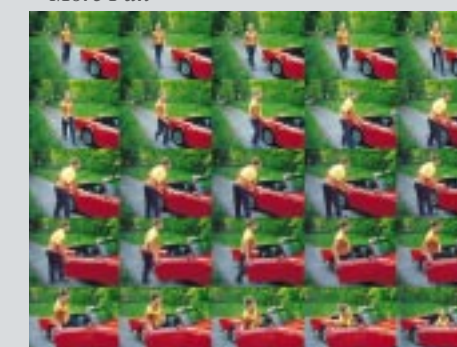
► Manual Shooting

Enables more creative control by letting you manually set exposure compensation (11 steps), white balance (6 positions) and flash intensity (5 levels).

► Macro Shooting

Allows macro shooting between about 6 cm/2.4 inch and 50 cm/1.6 ft.

► Video Recording with Sound for Even More Fun



FinePix40i uses the Motion JPEG format to record and play back up to some 80 seconds of video (320 × 240 pixels at 10 frames per second) with sound. This lets you relive moments in time that still images alone cannot reproduce.

Color LCD

You can immediately play back and check images that you shot by using the 1.8-inch

D-TFD color LCD monitor (110,000 pixels) built into the back of the camera.

Wide Range of Playback Features

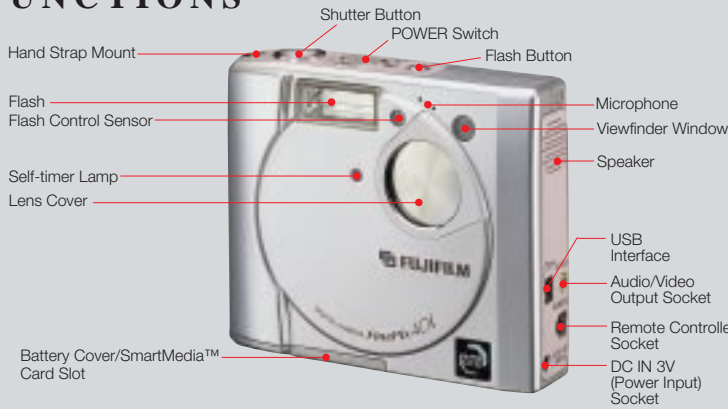
FinePix40i provides a wide range of playback features including multi-playback for displaying an array of nine images at once, playback zoom for enlarging the playback image up to 15 times, and auto-play for automatically displaying images. And if you use an audio/video cable to connect the camera to a TV, your still and video images will be ever more impressive.



Also available in cosmic blue

Easy Operation and Expanded Versatility

FUNCTIONS



SPECIFICATIONS

DIGITAL CAMERA FinePix40i

CCD sensor	1/1.7-inch Super CCD, 2.4 million pixels in an interwoven pattern
Image file size	4.3 million pixels (2,400 × 1,800) / 1,280 × 960 / 640 × 480, 24-bit color
File format	JPEG (Exif Ver 2.1) with 3 compression levels *Design rule for Camera File system compliant/DPOF-compatible
Storage media	For image data recording: SmartMedia™ cards (3.3V, 2MB to 64MB) For audio playback: SmartMedia™ cards with ID (3.3V, 16MB to 64MB)

Number of images			
Image file size (pixels)	2,400 × 1,800		
Image quality modes	Fine	Normal	Basic
Data sizes (Approx.)	1,700KB	800KB	330KB
4MB SmartMedia™	2	4	11
8MB SmartMedia™	4	9	23
16MB SmartMedia™	9	19	47
32MB SmartMedia™	18	38	94
64MB SmartMedia™	36	77	189

The data sizes and numbers of available shots will vary slightly depending on the type of subject.

Lens	Super EBC Fujinon Lens, equivalent to 36 mm on a 35 mm camera
Focus distance	Normal: 0.5 m / 1.6 ft. to infinity Macro: 6 cm/2.4 in. to 0.5 m/1.6 ft.
Aperture	F2.8/F9.8
Viewfinder	Real-image optical viewfinder
Exposure control	64-zone TTL metering, Programmed AE (Exposure Compensation in Manual mode)
Sensitivity	Equivalent to ISO 200
Shutter speed	1/4 to 1/1,000 sec.
White balance	Automatic Manual (Fine, Shade, Fluorescent light (Daylight), Fluorescent light (Warm White), Fluorescent light (Cool White), Incandescent light)
Flash	Auto flash using flash control sensor Effective range: Approx. 0.4 m/1.3 ft to 2.5 m/8.2 ft Flash mode: Auto, Red-eye Reduction, Forced Flash, Suppressed Flash, Slow Syncro
LCD monitor	1.8-inch color LCD monitor with 110,000 pixels
Interface	USB, Video/Audio, Remote controller
Video output	NTSC/PAL
Power source	2AA Ni-MH or Ni-Cd rechargeable batteries, AC power adapter (optional) (Alkaline batteries are not recommended.)
Dimensions	85.5 (W) × 71.0(H) × 28.5(D)mm / 3.4(W) × 2.8(H) × 1.1(D) inches
Weight	155g/5.5oz (excluding batteries)

Camera functions	Digital 3.75X Zoom (640 × 480 mode) 1.88X Zoom (1,280 × 960 mode) Self-timer Shooting mode: Auto, Manual, Motion Picture recording Playback: Single Frame (with 15X Playback Zoom)/9 Multi-frame/ Automatic Playback Resize: 2,400 × 1,800 → 1,280 × 960, 2,400 × 1,800 → 640 × 480 Protect, DPOF Motion Picture recording: 320 × 240 pixels, 10 frames/sec for up to 80 sec in AVI format Motion Picture recording time: From 22 sec (4MB SmartMedia™) to 364 sec (64MB SmartMedia™)
Audio functions	Audio format: MP3 (Sampling rate: 44.1 kHz, Bit rate: 128/112/96 kbps) Copyright protection method: InfoBind* *InfoBind™ is jointly developed by Nippon Telegraph and Telephone East Corporation (NTT-East), Nippon Telegraph and Telephone Corporation (NTT) and Kobe Steel, Ltd. It provides safe and secure network transmission of copyright material and prevents illegal copying by binding the contents in a SmartMedia™ with an unrewritable media ID.

Recording time			
Quality modes	128kbps	118kbps	96kbps
16MB SmartMedia™	15 min.	18 min.	20 min.
32MB SmartMedia™	30 min.	35 min.	40 min.
64MB SmartMedia™	60 min.	70 min.	80 min.

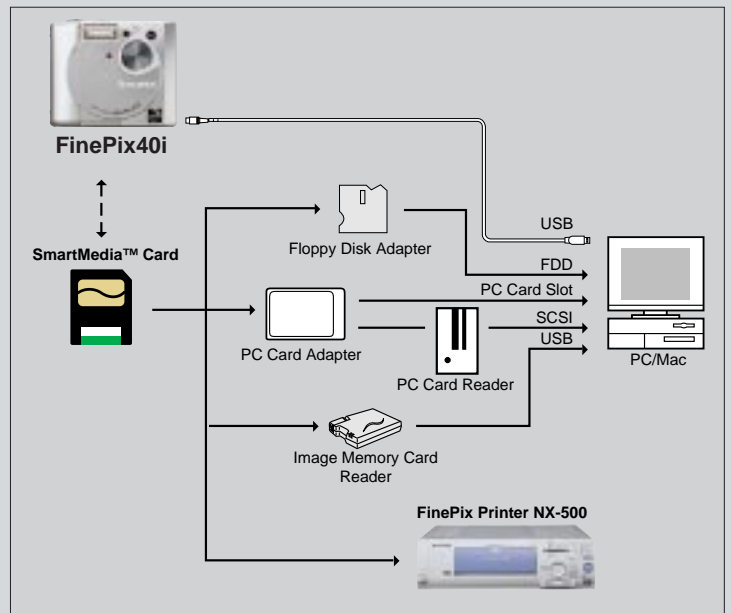
The recording time will vary slightly depending on the type of audio.

Included accessories	Ni-MH battery charger 2 AA type Ni-MH batteries Hand strap AV cable USB cable Headphone with remote controller CD-ROM • USB driver, ExifViewer, DP Editor • Adobe® ActiveShare • Apple® QuickTime, 4.0 • Audio Downloading software • RealJukeBox Plus for Windows® http://www.realnetworks.com/company/guide/logos/realjukebox.html • MacMP3 Limited Edition for Macintosh® http://www.macmp3.net/
-----------------------------	---

Optional accessories	SmartMedia™ cards MG-4S, MG-8S, MG-16S/SW, MG-32S/SW, MG-64S/SW Floppy Disk Adapter FD-A2 PC Card Adapter PC-AD3 Image Memory Card Reader SM-R2 Rechargeable battery 2HR-3UF (AA-type ×2, Ni-MH) Battery Charger with Batteries BK-NH (charges in approx. 2hrs, 220V only) Soft case SC-FX40
-----------------------------	--

Specifications are subject to change without notice.

SYSTEM CONFIGURATION



Apple is a registered trademark of Apple Computer Inc.
 Adobe is a registered trademark of Adobe Systems, Inc.
 RealPlayer and RealJukebox are a registered trademark and trademark of RealNetworks, Inc.
 Windows is a registered trademark of Microsoft Corporation.
 All other trademarks are the property of their respective holders.

For more information on Fujifilm digital products, please visit our Website: <http://home.fujifilm.com>



FUJIFILM
 FUJI PHOTO FILM CO., LTD.

26-30, NISHIAZABU 2-CHOME, MINATO-KU, TOKYO 106-8620, JAPAN

Ref. No. EB-013E (SK-00-07-DT-MW) Printed in Japan © 2000 Fuji Photo Film Co., Ltd.