

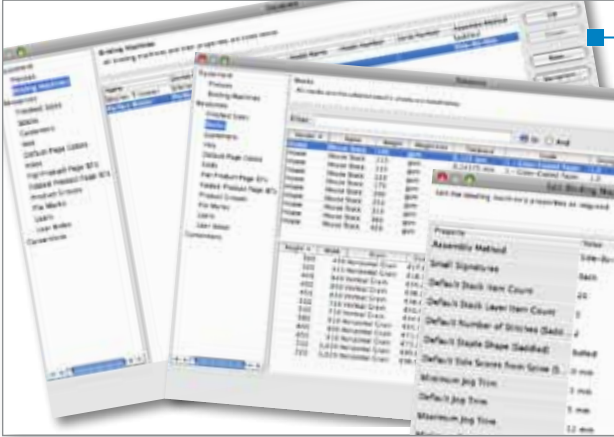


Metrix® is revolutionary, easy-to-use software that **dynamically** determines the most efficient, cost-effective project plans by applying its logic of optimum print practices to a **database** of your shop's presses, finishing equipment, and stocks. Metrix builds a library of the most successful project manufacturing plans, and then applies that **cumulative intelligence** to future projects. The result? Every Metrix operator is your **smartest** operator. Metrix completely eliminates the need for outdated imposition software, because project plans are converted into imposition data and sent **directly** into the prepress system. Metrix adds **unprecedented automation** to print workflows by seamlessly exchanging data with **MIS**, Prepress, and Finishing. Some people call Metrix the only intelligent, automated job planning and imposition system.

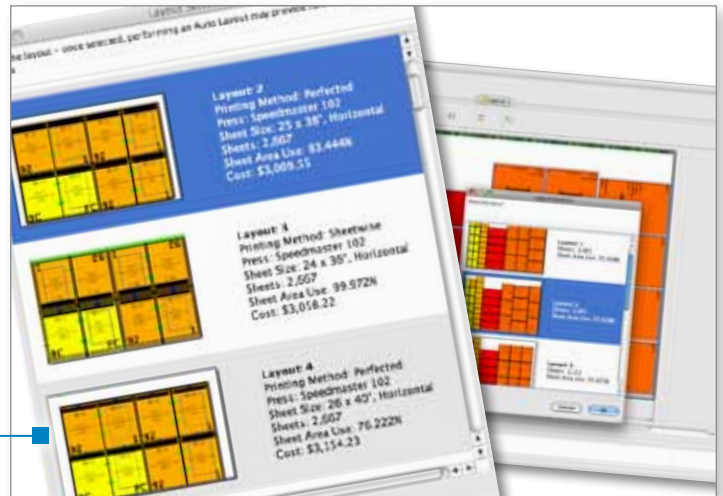
Others simply say, **"With Metrix, work just flows."**

WHAT IS **metrix**®

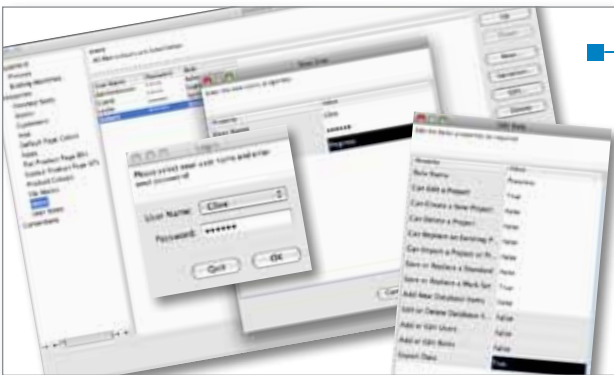
AND WHAT CAN IT DO FOR YOU ?



the metrix database stores your presses, finishing equipment, stocks, folds, user logins and permissions, along with your manufacturing standards. Metrix centralizes this all-important data to ensure uniformity, efficiency, and error-free planning and imposition across the entire enterprise.

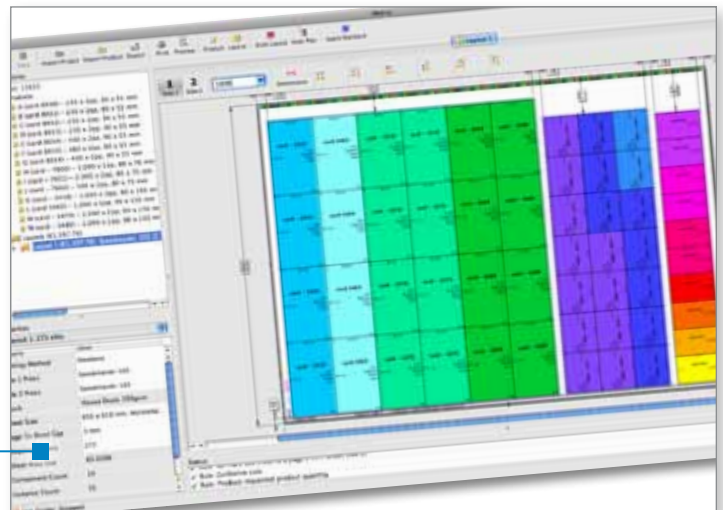


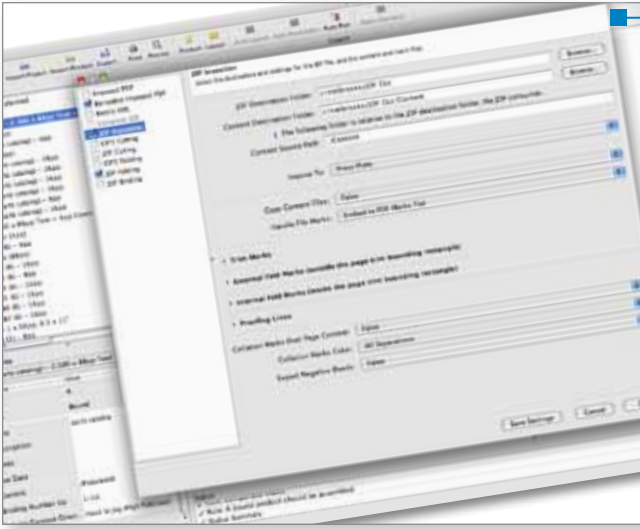
the metrix engine automatically and dynamically determines how many press sheets you need, the optimum layout for each press sheet, and even figures out for you the most cost-effective printing method, press, and sheet size!



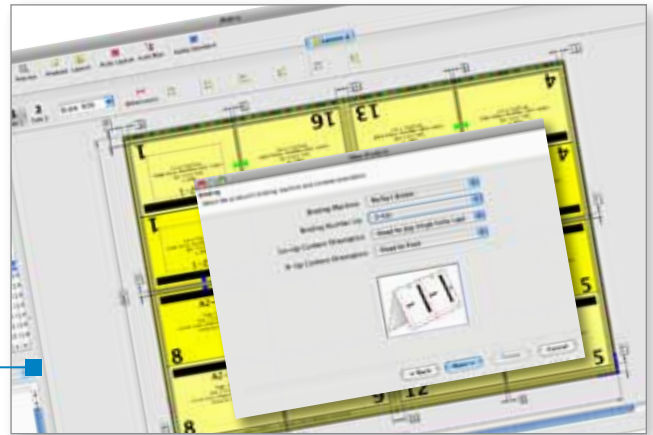
metrix access control prevents unqualified personnel from making changes to items in your database or to press-ready projects, ensuring the integrity of production-critical planning and imposition data.

metrix ganging is automatic, dynamic, and unsurpassed, processing up to 160 different orders (products) on a single layout. Once the layouts are planned, export JDF or imposed PDF to prepress, JDF or CIP3 to finishing, and barcoded information to your shipping department.

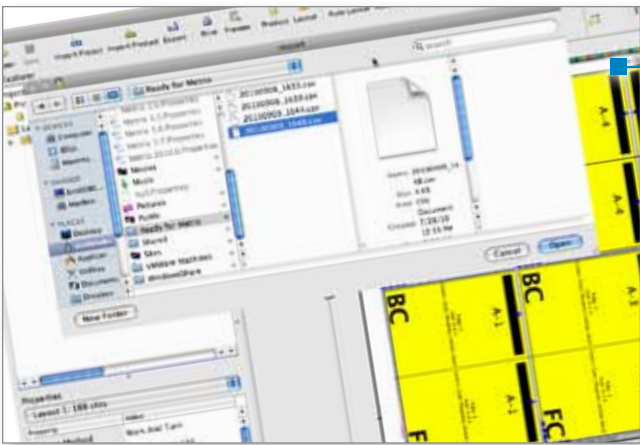




metrix eliminates the need for outdated desktop imposition software, because Metrix does the planning and the imposition all in one step – once the plan is done, simply export the JDF or the imposed PDF to your prepress system.



metrix simplifies the complex, empowering all your operators to generate plans formerly reserved for only the most skilled and experienced planners.



metrix is connected to your MIS, your order entry system, or your website storefront via XML or CSV. Metrix provides unparalleled integration with your front office systems and your production systems – streamlining your workflow, eliminating errors, and boosting productivity.

“By eliminating the need to re-key the project plans into Preps, the human error factor was reduced to zero.”
 – Dave McGaha, Belk Printing Technologies

“With Metrix, our estimators are able to gain the competitive edge and then send the layouts directly into prepress.”
 – Vincent Sita, Rex Three, Inc.

“Metrix has saved us countless hours in planning and prepress – sometimes even an entire shift of work for the larger jobs.”
 – Bonnie Pflug, Imagine Print Solutions

“On one job, Metrix came up with a layout we hadn't thought of that brought the price down \$7,000.”
 – Andrew Cook, Peel Graphics

METRIX EDITIONS AND FEATURES COMPARISON

FEATURE	METRIX BASE	METRIX X-80	METRIX X-8
Maximum sheet dimension (W x H)	144" (3657.6mm)	30" (762mm)	30" (762mm)
Maximum number of different orders (products) allowed for Auto Layout (automatic generation of optimum layout)	16	80	8
Maximum number of different orders (products) per project	100	500	50
Plans/imposes flat, folded, and bound jobs	•	•	•
Automatically determines the most cost-effective Production Method, Press, and Sheet Size (Auto Production)	•	•	•
Automatically matches new layouts to saved profiles (Standards)	•	•	•
Access Control: User Permissions, Logins, & Passwords	•	•	•
Handles chop cuts automatically (Auto Bleeds)	•	•	•
Prints reports	•	•	•
Imports JDF, Metrix XML and CSV data	•	•	•
Exports Imposed PDF	•	•	•
Exports Metrix XML	•	•	•
Exports JDF Imposition / JDF Stripping	•		
Exports JDF/CIP3 Cutting data	•		
Exports JDF/CIP3 Folding data	•		
Exports JDF Binding data	•		
Site Licenses available	•		
Auto Plan module	optional	included	N/A
Capacity Plus module	optional	N/A	N/A
N-Up Binding module	optional	N/A	N/A
Barcodes module	optional	N/A	N/A

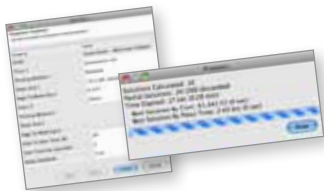
METRIX INTEGRATION

IMPORT FROM
MIS, Order Entry, Database, or Spreadsheet via XML or CSV
EXPORT TO
PrePress
<ul style="list-style-type: none"> • Agfa ApogeeX 2.5+ • DALiM MISTRAL 2.1+ • DALiM TWIST 6.1+ • EskoArtwork Nexus • EskoArtwork Odystar 2.0.3+ • Fuji Celebrant 6.03+ • FujiFilm XMF • Global Graphics Harlequin Genesis RIP (with JDF Enabler) • Heidelberg Printready 2.1 SP3+ • Kodak Evo 3.1+ • Kodak Prinergy 3.1+ • OneVision JDF Impose V1.0+ • Rampage 10.6+ • Screen TrueFlow SE v6.0+ • Xitron Navigator GPS 3.5+ • Xitron Xenith 4PDF 6.1+ • Xitron Xenith Sierra 1.5+
Folding Machines
<ul style="list-style-type: none"> • MBO Datamanager
Guillotine Interfaces
<ul style="list-style-type: none"> • Colter-Peterson Microcut • Polar Compucut 4.04+
Binding Machines
<ul style="list-style-type: none"> • Horizon • Muller-Martini

Compatibility is based on a minimum of one successful test by either LithoTechnics or the third party vendor.

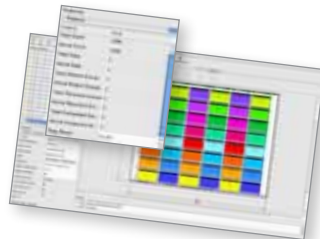
AUTO PLAN MODULE

- Calculates & creates the number of press sheets required for the project.
- Plans/imposes across multiple press sheets and even multiple presses.
- Uses real costing data from the Metrix database.



CAPACITY PLUS MODULE

- Processes up to 2000 orders (products) at once, regardless of the number of layouts.
- Up to 160 different products allowed per press sheet for Auto Production and Auto Layout calculations.



N-UP BINDING MODULE

- Automates the setup of books that print, fold, and bind 2- or 3-up.
- Provides instant visual feedback on how the multi-up signature fits on the press sheet.



BARCODES MODULE

- Provides the barcode identification of various job components.
- Barcoded Imposed PDF creates an overlay sheet for gang/combo runs.
- Barcode Marks identify job components for automated finishing systems.



FUJIFILM

FUJIFILM North America Corporation, Graphic Systems Division • Phone: 800.877.0555 • Email: contact@fujifilms.com • Web: www.fujifilmusa.com/graphics