



FUJIFILM DATA CARTRIDGE ANALYSER

INTRODUCING

the **FUJIFILM DATA CARTRIDGE (DC) ANALYSER**, a data tape diagnostic tool and software package that enables organizations to proactively monitor the health of their tape media. All LTO cartridges contain an internal memory chip with vital information about the cartridge. The **DC ANALYSER™** and software compiles this data and displays it in a graphical format. Data center managers can now quickly identify the source of backup problems and measure overall cartridge and drive health.

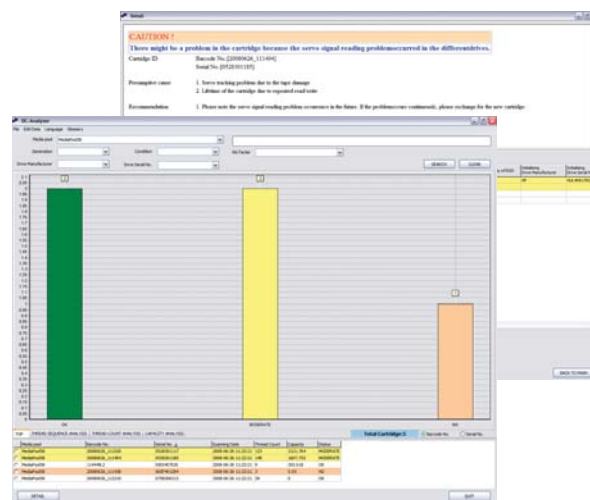
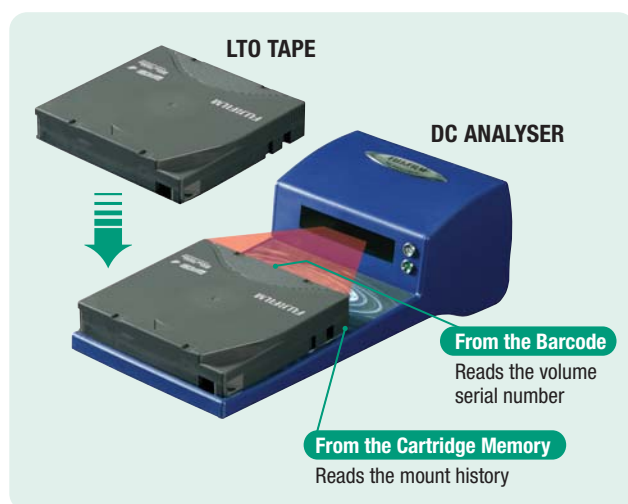
FUJIFILM

The easy-to-use DC Analyser and software quickly assess the condition of data tapes allowing users to diagnose and avoid backup issues, saving both time and money. Used regularly, the Fujifilm DC Analyser helps enterprises and library managers increase the reliability of their LTO tape backups and archives.

KEY FEATURES INCLUDE:

Dual CM and Barcode Readers

The DC Analyser unlocks key information hidden inside every cartridge memory (CM) chip. Information includes error codes, remaining capacity, total cartridge writes, reads, loads and age. The additional barcode scanner eliminates an extra step by automatically associating the correct volume serial number with the cartridge memory. This exclusive feature eliminates any chance for confusion down the road.



Easy-to-Use Software

The custom software package developed by Fujifilm includes diagnostic capabilities that only an experienced tape manufacturer could have. The easy-to-read graphs allow data managers to measure the health of an archive over multiple tapes and drives. The software will even recommend solutions and allow users to create a custom policy that grades every cartridge. By accumulating data from analyzed tapes, the DC Analyser removes the guesswork and quickly locates the source of issues without the need to access a drive, call in outside technicians or send sensitive data out to a third party for evaluation.

Quick On-site and Offline Diagnostics

USB plug and play connectivity allows users to start analyzing data tape at any Windows workstation. After placing an LTO tape on the DC Analyser, the CM chip data will be read in less than 7 seconds. The included software stores up to 18 record entries for each tape allowing users to review the tape's condition over the last 18 uses.

Software Requirements

O/S	Microsoft Windows® XP/Vista
Memory	512MB
HDD Space	10MB
Interface	1x USB port



The DC Analyser comes with the following:

- DC Analyser
- Carrying Case
- Software CD
- Manual
- USB Cable

© 2008 FUJIFILM Recording Media U.S.A., Inc.

Linear Tape-Open, LTO, the LTO Logo, Ultrium, and the Ultrium Logo are trademarks of HP, IBM and Quantum in the U.S. and other countries. Microsoft, Windows, XP, Vista and their logos are registered trademarks of Microsoft Corporation. Other trademarks are the property of their respective owners.

FUJIFILM Recording Media U.S.A., Inc., 200 Summit Lake Drive, Valhalla, NY 10595-1356
For more information, please call 1-800-488-3854 or visit us at www.fujifilmusa.com

CODE: DCA08-1 Printed on Recycled Paper

FUJIFILM